



each

East Anglia's
Children's Hospices

Leaving a gift to EACH in your Will





Our hospices are places where families feel safe, at home and where they can spend quality time together; enabling parents to be parents not caregivers.

Gifts in Wills - a vital source of funding for our care of children and young people, and their families.

Sadly, some lives are far too short. For over 30 years, East Anglia's Children's Hospices (EACH) has provided expert care to children and young people with life-threatening conditions across Cambridgeshire, Essex, Norfolk and Suffolk.

Our highly trained and experienced nursing team is here to give every child the chance to live the best, fullest life they can. We work closely with the whole family to offer choice and control over their child's care. We support children in their own homes or in hospital – or we can welcome them to one of our purpose-built hospices at Milton (Cambridge), The Nook (Norwich) and The Treehouse (Ipswich).

The specialist medical care we provide allows children and their families to cope with often extremely complex and challenging conditions. We offer a range of fun, exciting activities in a safe environment that allow children to play and enjoy life, as all children should do. And, when the time comes, we're there to ensure the end of their life is reached in the place they want to be; in peace, without pain and with those they love.

Gifts in Wills fund the care of 1 in 6 of the children we support.

EACH is a charity; we rely on the generosity of our local community to fund the wide range of services we offer – completely free of charge – to over 600 children, young people and family members each year. The gifts we receive from people in their Wills are a vital source of funds. These thoughtful, considered gifts – made often many years before – cover around 16% of our charity's income. Without them, we simply could not meet the needs of children and families in our community.

A gift in your Will to EACH is a very special way of ensuring we can continue to be here for children and families for years to come.





Libby and her brother Jake

“It’s a huge relief, a warm comfort blanket knowing EACH will be there for Libby, whenever she needs them.”

“I really don’t know where Libby, and us, would be without EACH.”

My beautiful daughter, Libby, has Bohring-Opitz syndrome, a very rare genetic condition that affects all aspects of her growth and development. She can’t move by herself and needs constant, round-the-clock care. But she is the centre of our world – and every day we spend with her is precious.

EACH is part of our family now too. It took me a long time to trust them enough to leave Libby fully in their care. But they came to know Libby so well, so quickly. She’s really happy when she’s at EACH, I can see it. Her absolute favourite thing is going in their hydrotherapy pool (because of her condition, she can’t go in a public pool). Just seeing how Libby reacts in those 20 minutes from first getting in the water, with a nurse in there to support her, is incredible. She starts out stiff, but then you see her slowly relaxing her muscles and a smile comes across her face. It makes my heart melt, every time.

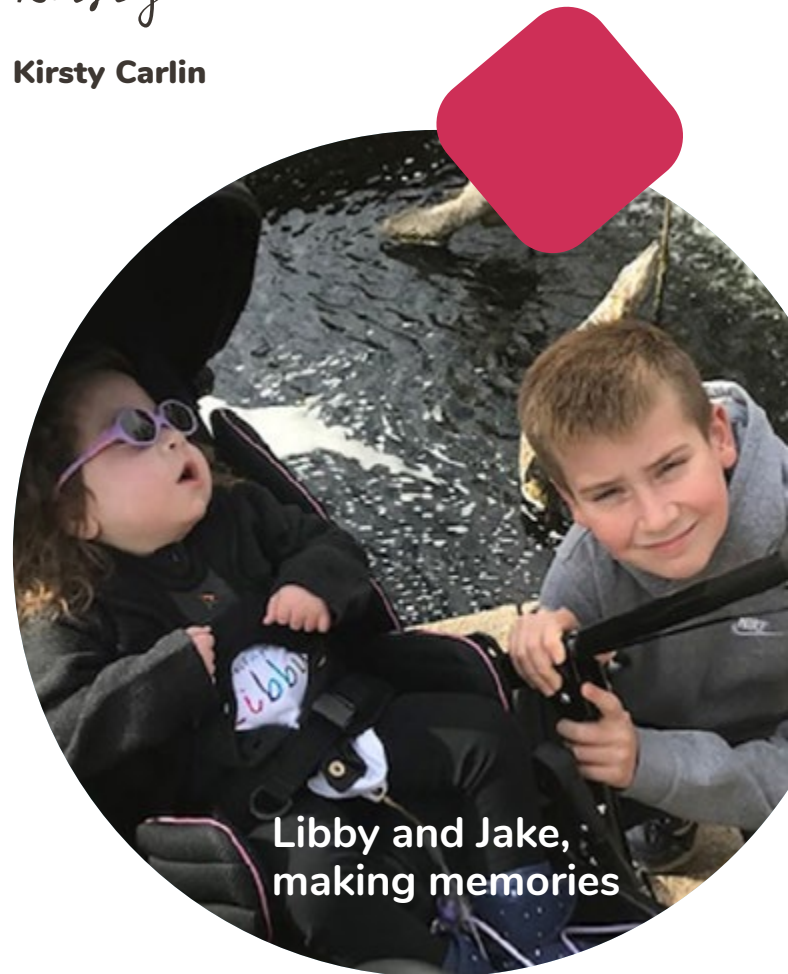
Libby being at EACH means I can relax and grab a few hours’ precious sleep, knowing she’s receiving exceptional care. This is also really important time we can spend with her (completely doting) brother Jake, doing something fun or just watching a film together. His life has been severely affected by Libby’s illness; he’s seen her having fits, turning blue – it’s been a very worrying time for him. EACH has given him focused time and support too. He’s really benefitted from being able to attend sibling support sessions, where he can be with others who know what it’s like to have a little brother or sister with a serious condition.

EACH has made a huge difference to our family and the way we look at our lives now. Before EACH, I would hear the word ‘hospice’ and these sad, depressing images popped into my head. But it really isn’t a sad place at all. EACH’s hospice at Milton is so vibrant, it’s warm and welcoming. It’s somewhere we can go as a family and, together, make amazing memories.

We don’t know what the future holds for Libby, we’ll just keep on taking each day at a time. But it’s a huge relief, a warm comfort blanket knowing EACH will be there for Libby, whenever she needs them.

Kirsty

Kirsty Carlin



**Libby and Jake,
making memories**

“My father always said that children were the ‘jewels of life’. His gift to EACH reflects his love of children – and of East Anglia.”

My father, John Leathley Chater, was an Anglican priest for over 50 years. His love for this beautiful part of our country was founded in his time as a regimental soldier in the East Anglian regiment; although he travelled widely, he never lost his love for this, his favourite place.

He was a wonderful, intelligent, vibrant man. At home, he was a devoted husband to our mother and a loving father to us – their four children. Throughout our lives there were always books, poetry, music and especially his passion, amateur dramatics. There was always a story to be told, a song to be sung.

In his work as a priest, he devoted his time to the communities he served. He was a passionate supporter and servant of those less fortunate in his congregation, driven by his desire to see a world of fairness and equality. He invested his time selflessly. He was especially devoted to supporting children in his community, there was always a Sunday School each week, which he led with his typical humour and enthusiasm.

Our father hadn't told us about leaving money to EACH – we only knew when his solicitor read out his Will. But we were happy. It made complete sense. Our father's last act was to ensure he could continue to support the 'jewels' he had fought so passionately for in life – in his beloved East Anglia.

It is a great comfort for us to know that in this way he will be continuing his life's work – and I hope that others will be inspired to follow his example in supporting such a worthy charity.

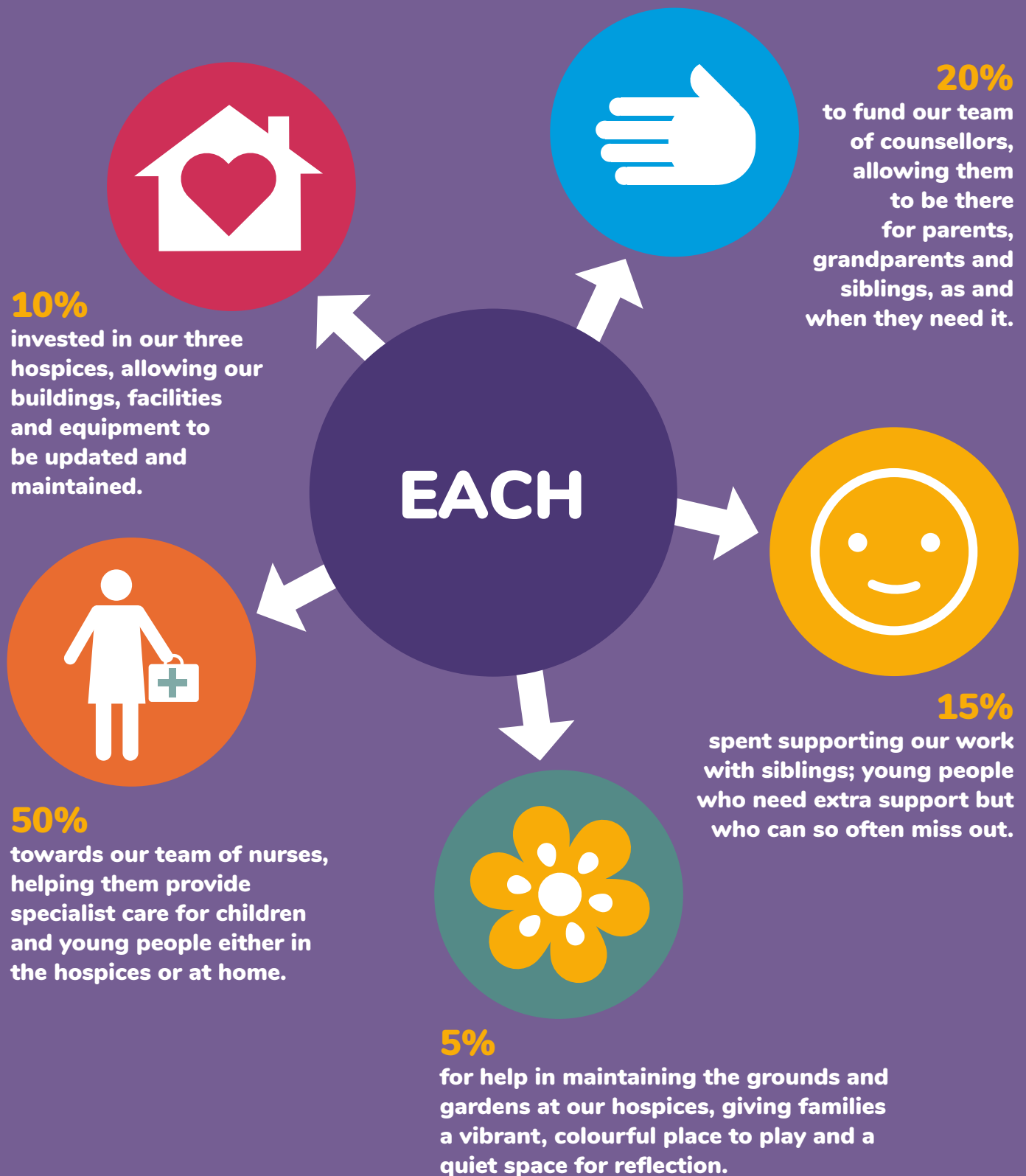
Virginia

Virginia Chater



Me and my wonderful dad, John

Here's how John's generous gift could be broken down to help the children we care for:



“We’ve supported EACH for over 30 years. Leaving a gift in our Will means we can continue to support local children once we’re no longer here.”



**Ann and
Roger**

Roger and I have been involved in EACH right from the very start. We knew the people who came together to set up the first hospice and we were glad to volunteer. Back in those days it was all hands to the pump. I’d come in to do the administration while Roger did the books. When we had a coffee morning, I’d be in the hospice making drinks, Roger would be out organising the car park.

As the years passed, and the hospice grew, we continued to give our time. We would both come in on Tuesdays and help where we could, supporting the staff, playing with the children. Everyone called us “The Grandparents” – I think they liked having us there, making the hospice feel more homely!

We’re unable to volunteer anymore, but we still keep in touch. We’ve visited all the hospices and it’s so lovely to see how they’ve all grown and developed now, the wonderful facilities they have. And this has all come about because local people keep giving their support, just as it’s been our privilege to do for so many years.

We didn’t have to think twice about leaving a gift in our Will to EACH. The children matter so much to us; this is how we can make sure we can continue to support them when we are no longer here.

Ann and Roger

Ann and Roger Kerrison

Making your Will is an important decision for you and your family. We're here to help.

A Will is a vital document for you, ensuring those you care about are provided for after your death. Without a valid Will, your specific wishes for your family and loved ones may not be carried out. The final value of your estate after tax can often be significantly reduced.

Making a Will is a simple process that most solicitors will be able to assist with. The Law Society offers a free 'Find a Local Solicitor' service which can be found at The Law Society's website, www.lawsociety.org.uk – or by calling them on **020 7320 5650**.

EACH also works in partnership with Farewill, the UK's largest online Will writing organisation. They offer a simple, straightforward service and have an excellent reputation. You can find them by visiting www.farewill.com/each-free where we have a limited number of free Wills available.





We care for children and young people with life-threatening conditions across Cambridgeshire, Essex, Norfolk and Suffolk, and support their families.

Your gift to EACH in your Will – our promise to you.

- We understand writing your Will is personal to you.
- We respect many people choose to put their family and loved ones first.
- We will use your gift carefully and cost effectively to help provide care and support to children and their families.
- We respect your right to change your mind about leaving a gift in your Will to EACH.
- We would love to hear if you've chosen to leave a gift to EACH in your Will, but you don't have to inform us.

Hello, I'm Jessica, part of the fundraising team here at EACH.

I'm here to help. If you would like to know more about our care of children and young people, arrange a visit to one of our hospices, or discuss how a gift to EACH in your Will could work best for you, please do get in touch for an informal, confidential conversation.

You can reach me by email at jessica.sayer@each.org.uk or call me directly on **01223 800807**.

Thank you!

Jessica



Different ways you can leave a gift in your Will to support local children and their families.

There are several kinds of gifts you can leave. Each gift is special to us and ensures that we're able to provide the very best care and support to the children and families who need us, today and into the future.

A cash (or 'pecuniary') gift

This is when you choose to leave a single, defined cash gift from your estate.

A specific gift

This type of gift is usually something like property or an individual valuable item, such as an antique or piece of jewellery.

A life interest

If you wish, you can leave a gift for use over a specific period, for example, the income from an investment. After that time has passed, the gift can then be passed on to another recipient or family member.

A share of your estate or 'residuary' gift

After you've provided for your loved ones and taxes have been paid, you could choose to leave a share, or the full remainder (the residue) of your estate to EACH. This means that you can pass on your estate to those you care about according to your wishes, and also support local children's hospice care into the future.



Inheritance Tax

Each individual has a tax-free allowance of £325,000 before Inheritance Tax at 40% becomes due. Leaving your family home directly to your descendants raises this allowance to £500,000 (correct as of February 2023). All gifts to charities such as EACH are deducted from the value of the estate before Inheritance Tax is calculated – and thus can reduce the total amount of Inheritance Tax due. Leaving more than 10% of the value of your estate to charity can also reduce the taxable rate to 36% for some of your estate.

Inheritance Tax law changes often – and we would always advise seeking professional legal advice before making the decision that is right for you and your family.

Suggested wording to help you make your gift to EACH.

We strongly recommend using a specialist solicitor or Will writing expert to help create or change your Will. They can advise and support you to ensure that your estate is distributed exactly according to your wishes, and on how to minimise the impact of Inheritance Tax.

If you do decide to leave a gift in your Will to EACH, you will need to provide clear and unambiguous instruction to your executors. Here is some wording we recommend you discuss with your solicitor:

For a residuary legacy:

“I give all / a fraction / a percentage of the residue of my estate absolutely to East Anglia’s Children’s Hospices, Church Lane, Milton, Cambridgeshire, CB24 6AB, Registered Charity Number 1069284, to be applied by East Anglia’s Children’s Hospices for its charitable purposes, and I further direct that the receipt of the Hon. Treasurer or any other proper officer of East Anglia’s Children’s Hospices, for the time being, shall be sufficient discharge to my trustees.”

For a pecuniary legacy:

“I give to East Anglia’s Children’s Hospices, Church Lane, Milton, Cambridgeshire, CB24 6AB, Registered Charity Number 1069284, absolutely, the sum of (amount in figures, amount in words) to be applied by East Anglia’s Children’s Hospices for its charitable purposes, and I further direct that the receipt of the Hon. Treasurer or any other proper officer of East Anglia’s Children’s Hospices, for the time being, shall be sufficient discharge to my trustees.”



A glossary of common terms.

Estate: The property, including money, owned by the deceased, after any debts and/or expenses have been taken into account.

Beneficiaries: People or organisations – for example, a charity – who benefit from a Will.

Executors: Person(s) appointed in a Will by the testator to deal with the estate after their death.

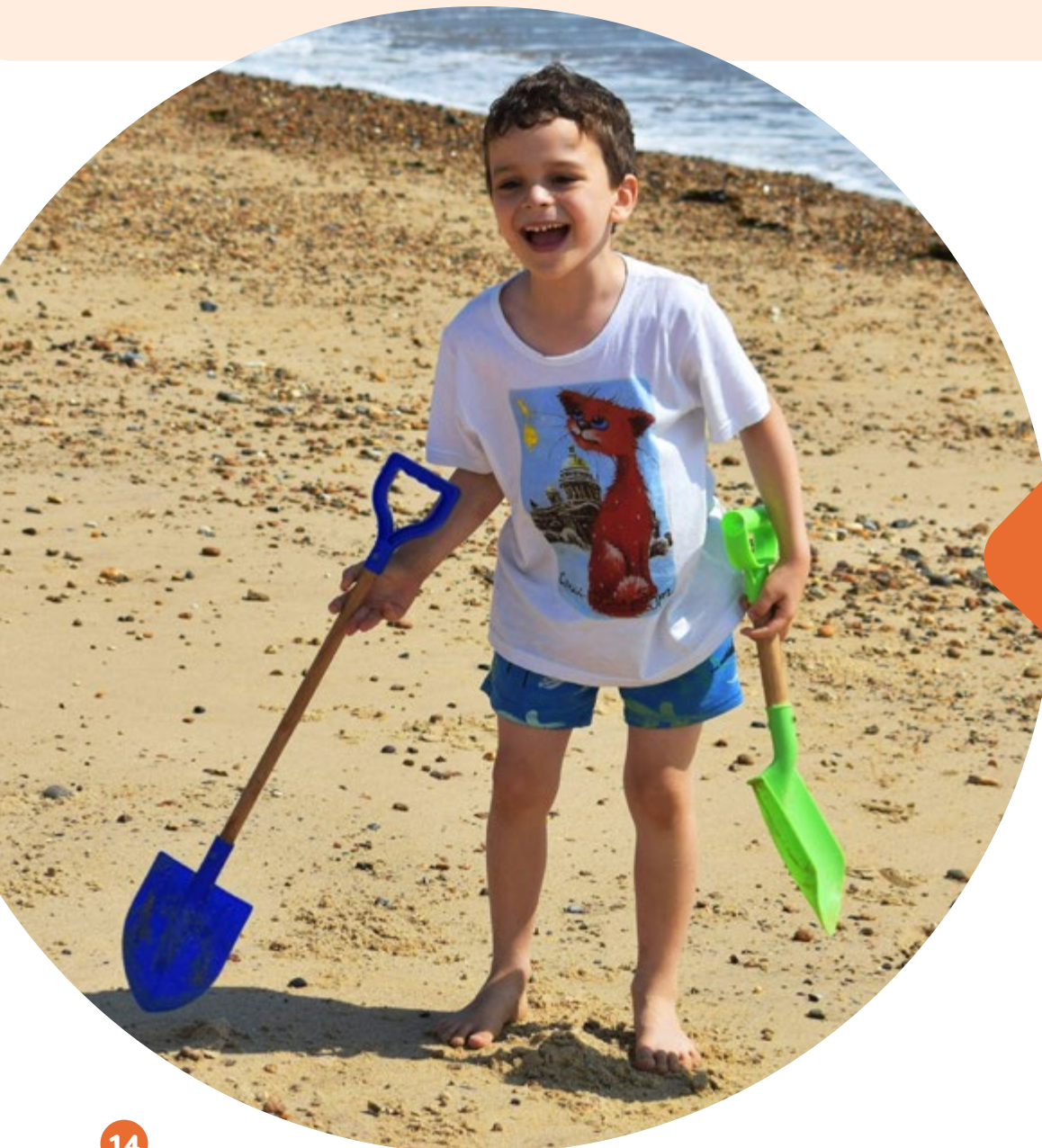
Guardian(s): Person(s) appointed in a Will by the testator to look after their children, if there is no-one else with parental responsibility to do so.

Residuary gift: A share of the estate (i.e. percentage) allocated in the Will by the testator.

Pecuniary gift: A single, defined cash gift from your estate.

A specific gift: An individual valuable item, such as an antique or piece of jewellery.

Testator: A person who has made a Will or given a legacy.





each

East Anglia's
Children's Hospices

Please tell us if you would like to leave a gift in your Will to EACH – or would like to know more before deciding.

Simply detach this form and return it to us at this address:

Jessica Sayer, EACH, Church Lane, Milton, Cambridgeshire, CB24 6AB.

Or contact Jessica directly, who will be happy to answer any questions you may have. You can reach Jessica by email at jessica.sayer@each.org.uk or by phone on **01223 800807**.

- I have already included EACH in my Will.
 I am considering leaving a gift to EACH in my Will.
 I would like to discuss the idea of leaving a gift to EACH.

I am happy for you to contact me by:

- Post Email Phone Text

Please write your details below:

Title	First Name	Surname
Address		
		Postcode
Telephone		
Email		

Your support will make a big difference to the lives of many families and we'd love to send you information on our vital work and the many ways you can support us, including events, fundraising, donating and volunteering. Please let us know if you would be happy to be contacted by:

- Post Email Phone Text

Privacy Policy

If at any time you want to stop hearing from EACH, change how we contact you or what we contact you about, you can call us on **01223 800807** or email us at supportercare@each.org.uk.

We promise to hold your data in the strictest confidence. To view our full privacy policy, please visit www.each.org.uk/privacy.



EACH

Church Lane, Milton, Cambridge, CB24 6AB

T: 01223 800807 E: supportercare@each.org.uk

www.each.org.uk

 EACHhospices  EACH_hospices

 EACHhospices  EACHhospices

Registered Charity Number: 1069284
Royal Patron: HRH The Princess of Wales

