

TEACHERS RESOURCES

MATHS – MATCH THE MONEY

The images represent aspects of our work and the corresponding numbers showing the costs of those services.

The basic activity would be to cut these images out and match the cost to the image but you can adapt the activity, e.g. for older students you could discuss the images and notes about each aspect of our work and ask students to guess costs before the basic activity. All of the costs are marked as per hour/per day etc. so you could also create an extra task of working out costs over a longer period of time.

Music Therapy = £46 for two hours so how much would it cost for six hours

£ 16

FOR ONE HOUR

£ 23

FOR ONE HOUR

£ 46

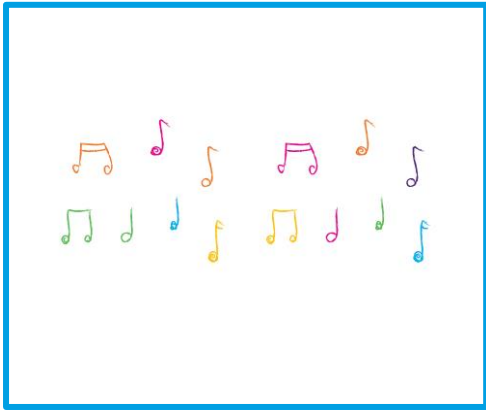
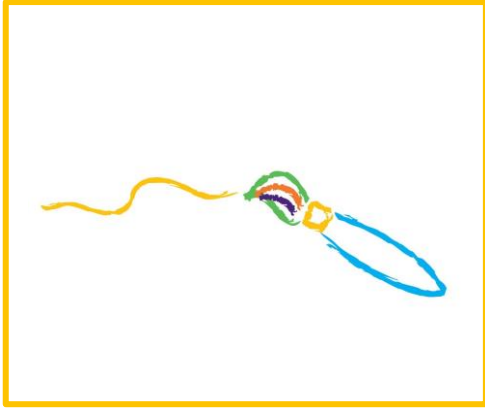
FOR TWO HOURS

£ 76

FOR FOUR HOURS

£ 114

FOR SIX HOURS



**PLAY SPECIALISTS HELP
SUPPORT A CHILD
TAILORING PLAY TO
THEIR INDIVIDUAL NEEDS**

**ART THERAPISTS HELP A
CHILD OR FAMILY
MEMBER EXPRESS THEIR
EMOTIONS THROUGH ART**

**MUSIC THERAPY IS USED
TO HELP CHILDREN AND
FAMILIES TO EXPRESS
THEMSELVES AND
COMMUNICATE**

**EXPERT AND SPECIALIST
NURSING CARE FOR ALL
CHILDREN AND YOUNG
PEOPLE USING EACH
SERVICES**

**A SESSION OF
COUNSELLING FOR A
FAMILY MEMBER GIVING
THEM ONE-TO-ONE
EMOTIONAL SUPPORT
DURING DIFFICULT TIMES**

TEACHERS RESOURCES

MATHS – MATCH THE MONEY – ANSWERS

£16 FOR ONE HOUR = PLAY

£23 FOR ONE HOUR = ART

£46 FOR TWO HOURS = MUSIC

£76 FOR FOUR HOURS = NURSING CARE

£114 FOR SIX HOURS = COUNSELLING